

Map 1



Map 2



Curb Ramps are associated w/ Town of Forest City (> 5K in Population).

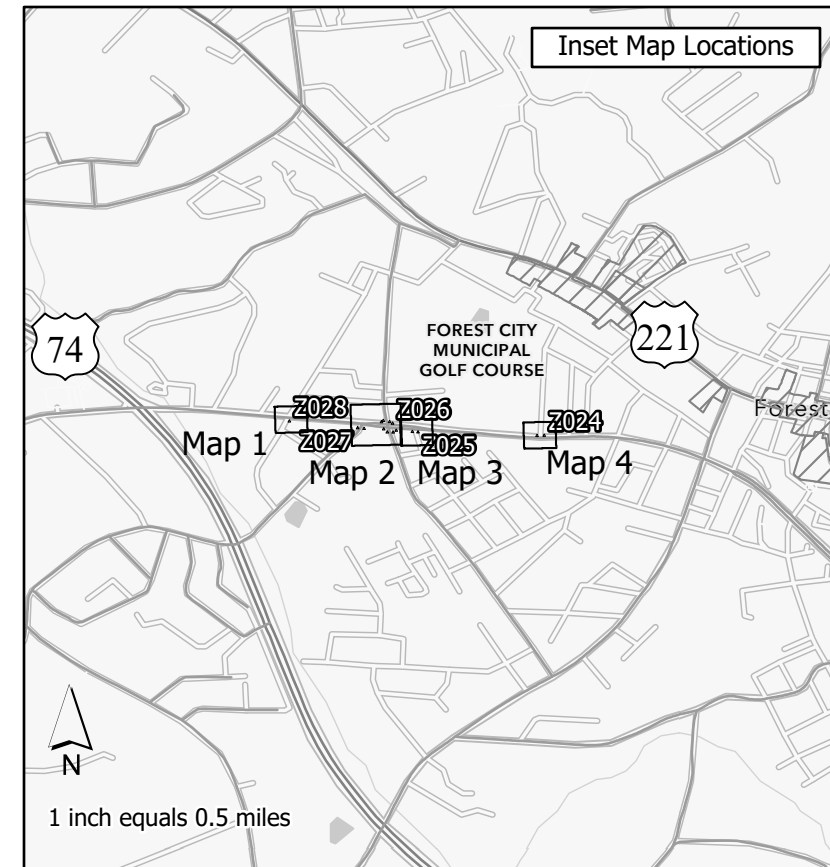
Intersection ID	Major Route	Minor Route	Latitude	Longitude
Z028	SR 2179 Oak St	Westwood Dr	35.333461	-81.884806
Z027	SR 2179 Oak St	Butler Rd	35.333181	-81.881993
Z027	SR 2179 Oak St	Butler Rd	35.333207	-81.882234
Z026	SR 2179 Oak St	Hardin St	35.333164	-81.881253
Z026	SR 2179 Oak St	Hardin St	35.333048	-81.881119
Z026	SR 2179 Oak St	Hardin St	35.333044	-81.880898
Z026	SR 2179 Oak St	Hardin St	35.333114	-81.880784
Z026	SR 2179 Oak St	Hardin St	35.333434	-81.881338
Z026	SR 2179 Oak St	Hardin St	35.333482	-81.88127
Z026	SR 2179 Oak St	Hardin St	35.333379	-81.88092
Z026	SR 2179 Oak St	Hardin St	35.33344	-81.881035
Z025	SR 2179 Oak St	Grove St	35.33305	-81.879962
Z025	SR 2179 Oak St	Grove St	35.333066	-81.880175
Z024	SR 2179 Oak St	Golf St	35.332924	-81.875212
Z024	SR 2179 Oak St	Golf St	35.332916	-81.875481

*No curb ramps proposed for construction within this sheet fall within or are adjacent to NC HPO Historic Districts

Map 3



Map 4

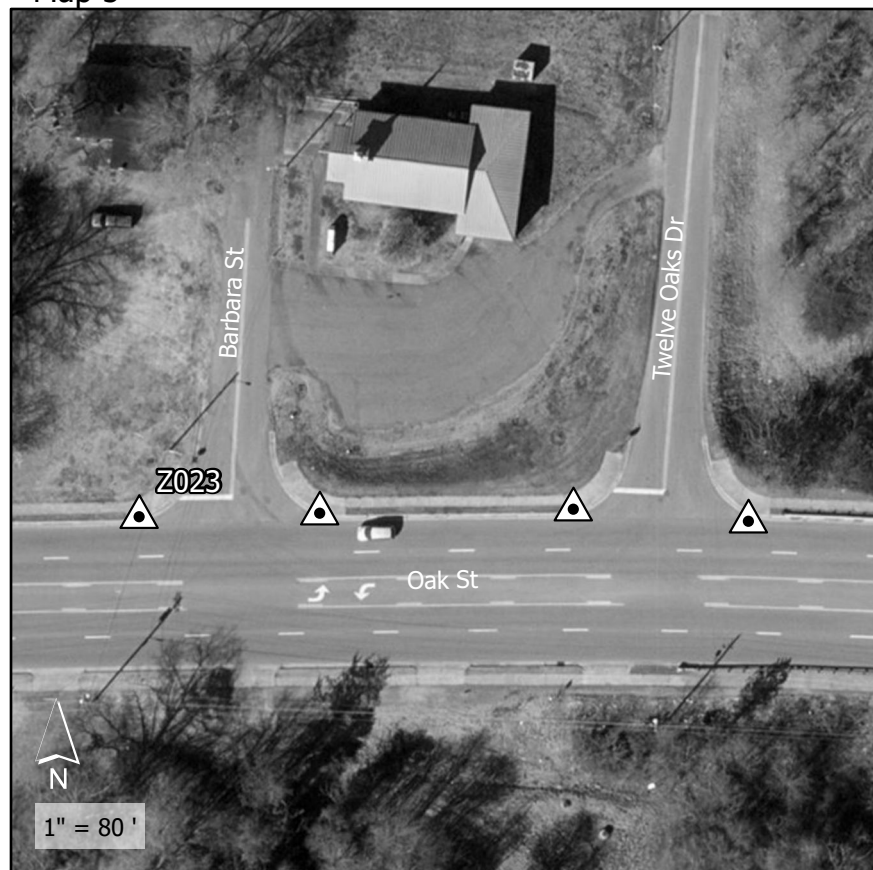


- ADA Ramp - Upgrade
- ADA Ramp - New
- ADA Ramp - Remove
- NC HPO Historic Districts
- Interstate
- US Route
- NC Route
- Secondary Route

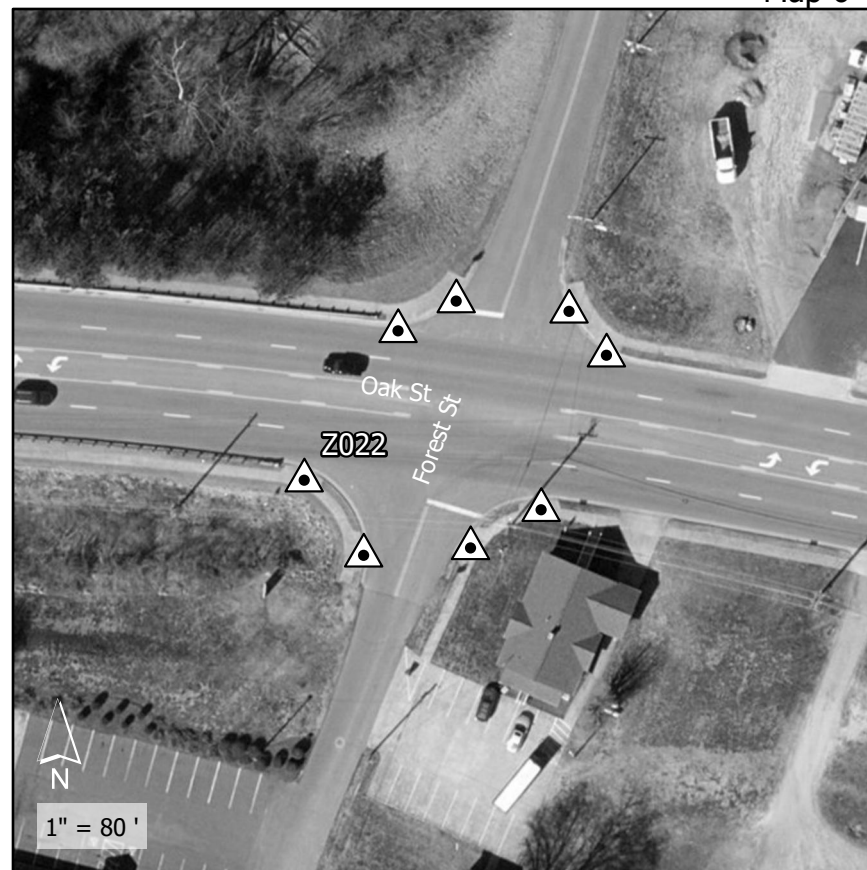
Contract# DM00433
R-5793KA Upgrades/
Installation
WBS# 44923.3.22
FA# 4492313
Sheet 1



Map 5

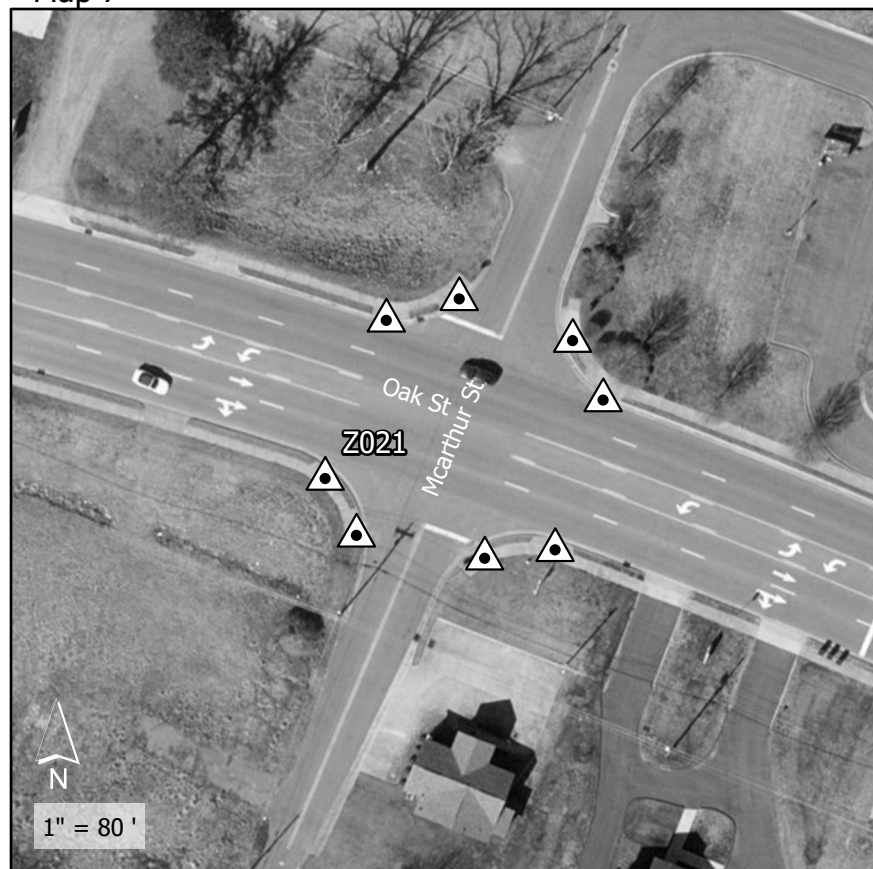


Map 6

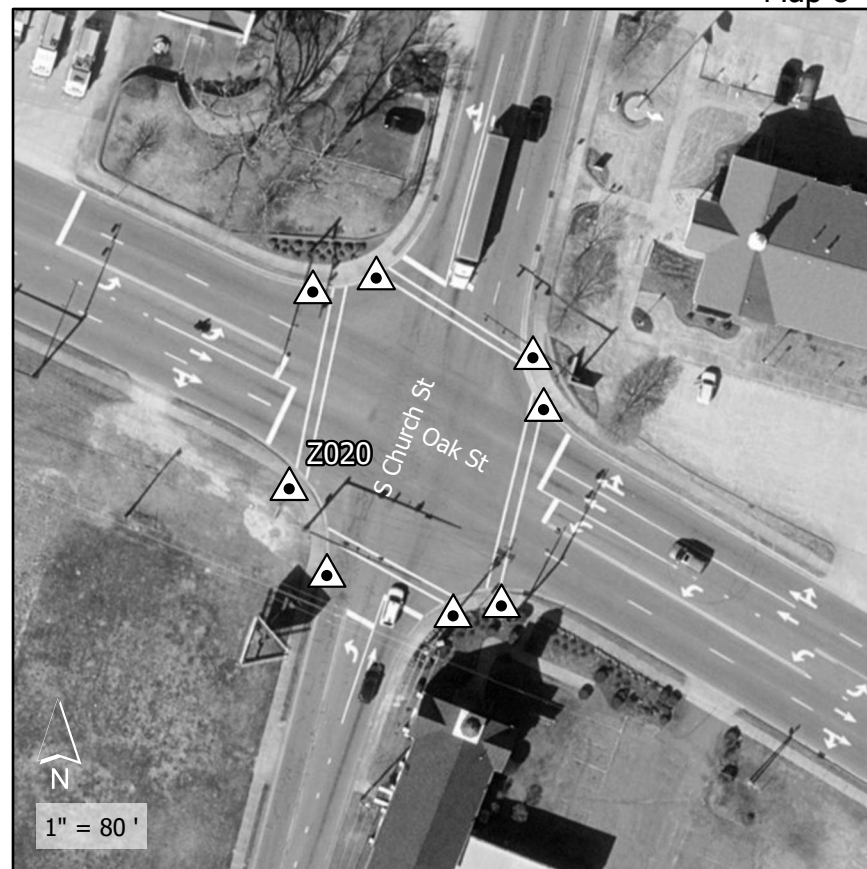


*No curb ramps proposed for construction within this sheet fall within or are adjacent to NC HPO Historic Districts

Map 7

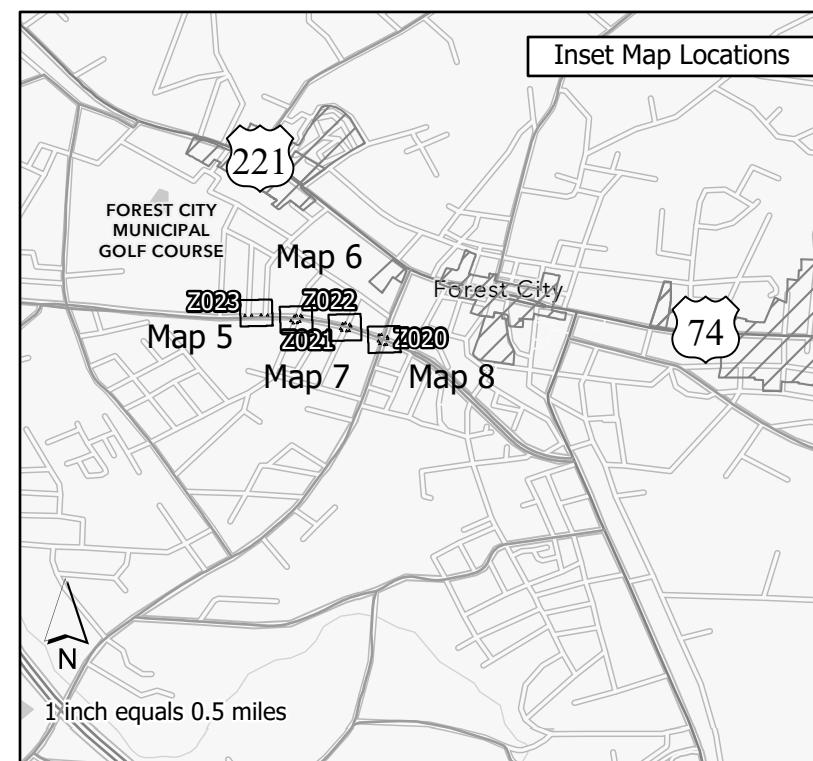


Map 8



Curb Ramps are associated w/ Town of Forest City (> 5K in Population).

Intersection ID	Major Route	Minor Route	Latitude	Longitude
Z023	SR 2179 Oak St	Twelve Oaks Dr	35.332957	-81.873557
Z023	SR 2179 Oak St	Twelve Oaks Dr	35.332965	-81.873802
Z023	SR 2179 Oak St	Barbara St	35.332952	-81.874156
Z023	SR 2179 Oak St	Barbara St	35.332942	-81.874408
Z022	SR 2179 Oak St	Forest St	35.332717	-81.872345
Z022	SR 2179 Oak St	Forest St	35.332671	-81.872442
Z022	SR 2179 Oak St	Forest St	35.332659	-81.872591
Z022	SR 2179 Oak St	Forest St	35.332743	-81.872677
Z022	SR 2179 Oak St	Forest St	35.332917	-81.872552
Z022	SR 2179 Oak St	Forest St	35.332953	-81.872472
Z022	SR 2179 Oak St	Forest St	35.332945	-81.872314
Z022	SR 2179 Oak St	Forest St	35.332896	-81.87226
Z021	SR 2179 Oak St	McArthur St	35.332373	-81.870484
Z021	SR 2179 Oak St	McArthur St	35.332361	-81.870582
Z021	SR 2179 Oak St	McArthur St	35.332383	-81.870762
Z021	SR 2179 Oak St	McArthur St	35.332447	-81.870808
Z021	SR 2179 Oak St	McArthur St	35.33263	-81.870729
Z021	SR 2179 Oak St	McArthur St	35.332657	-81.870628
Z021	SR 2179 Oak St	McArthur St	35.332613	-81.870468
Z021	SR 2179 Oak St	McArthur St	35.332546	-81.870423
Z020	SR 2179 Oak St	Church St	35.332139	-81.869051
Z020	SR 2179 Oak St	Church St	35.331841	-81.869152
Z020	SR 2179 Oak St	Church St	35.331883	-81.86933
Z020	SR 2179 Oak St	Church St	35.331981	-81.869386
Z020	SR 2179 Oak St	Church St	35.332207	-81.869361
Z020	SR 2179 Oak St	Church St	35.332225	-81.869273
Z020	SR 2179 Oak St	Church St	35.331854	-81.869085
Z020	SR 2179 Oak St	Church St	35.33208	-81.869034

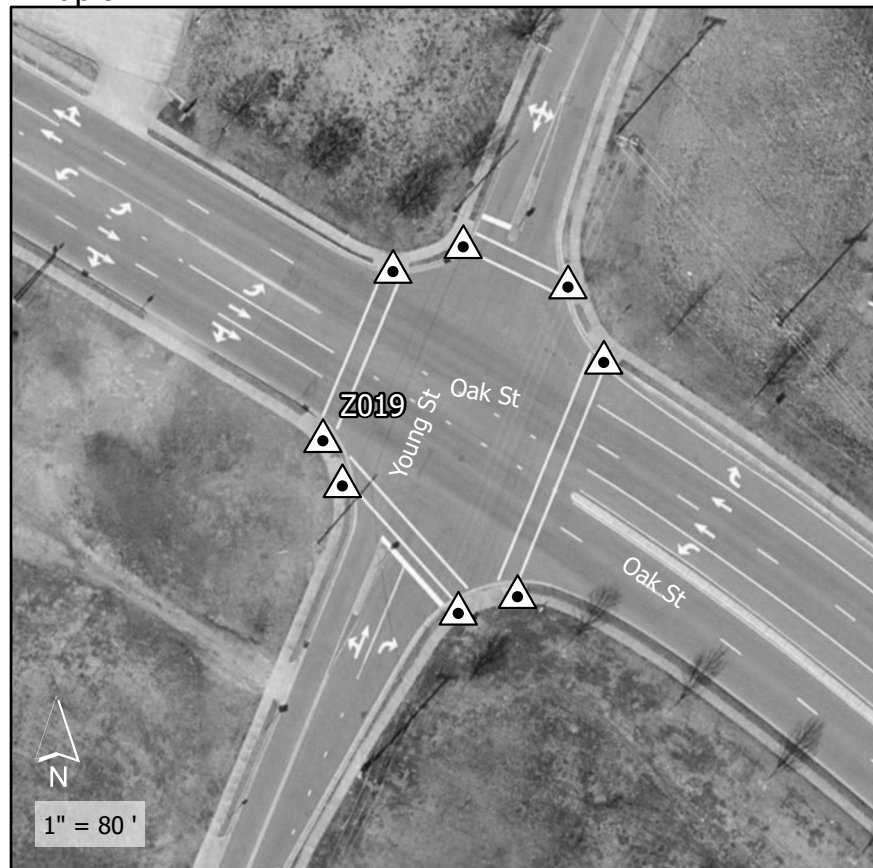


- ADA Ramp - Upgrade
- ADA Ramp - New
- ADA Ramp - Remove
- NC HPO Historic Districts
- Interstate
- US Route
- NC Route
- Secondary Route

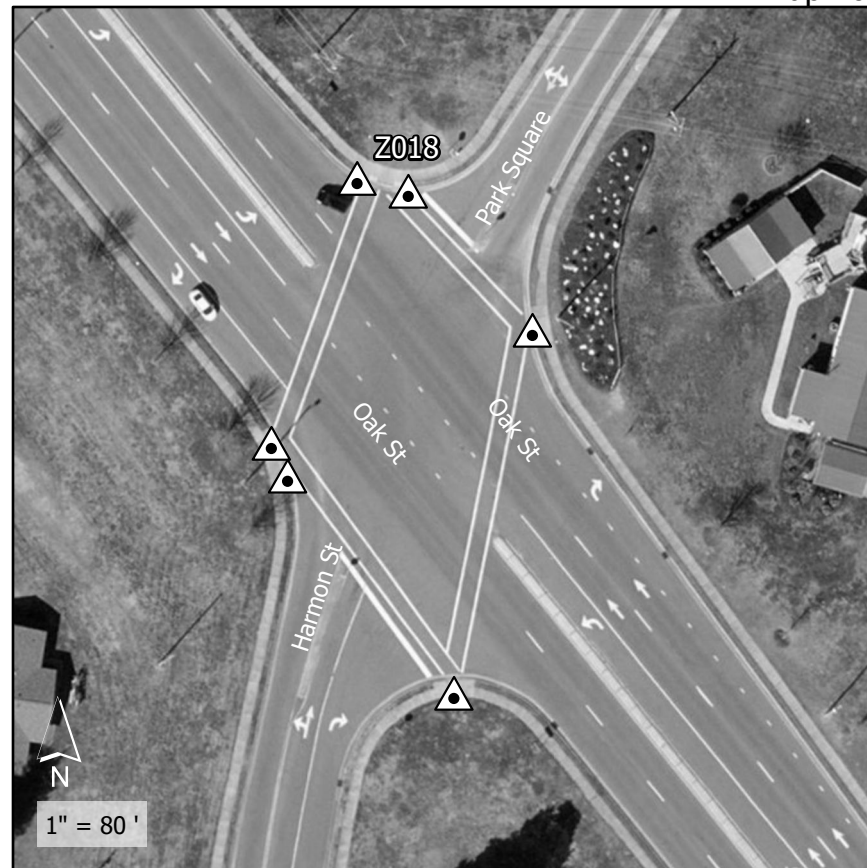
Contract# DM00433
R-5793KA Upgrades/
Installation
WBS# 44923.3.22
FA# 4492313
Sheet 2



Map 9

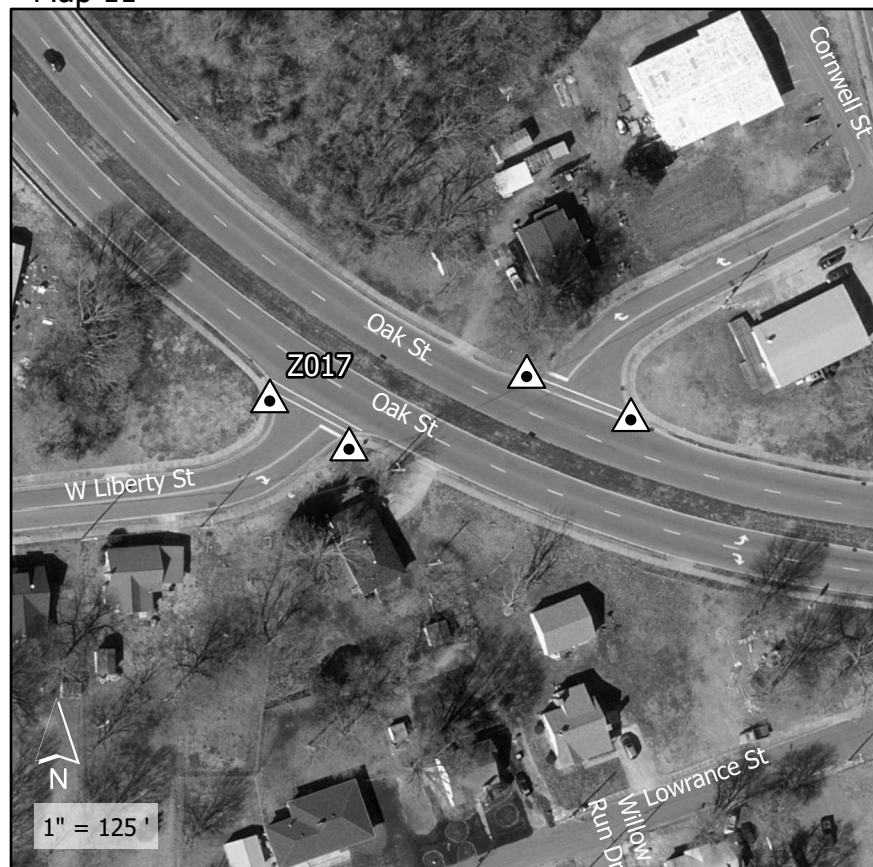


Map 10

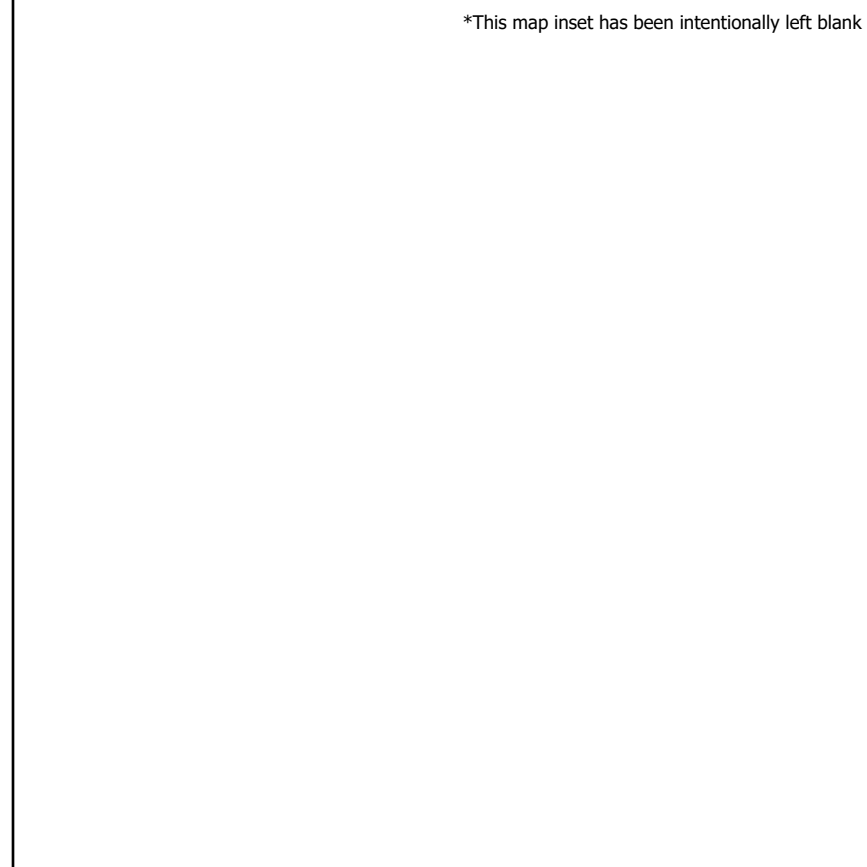


*No curb ramps proposed for construction within this sheet fall within or are adjacent to NC HPO Historic Districts

Map 11

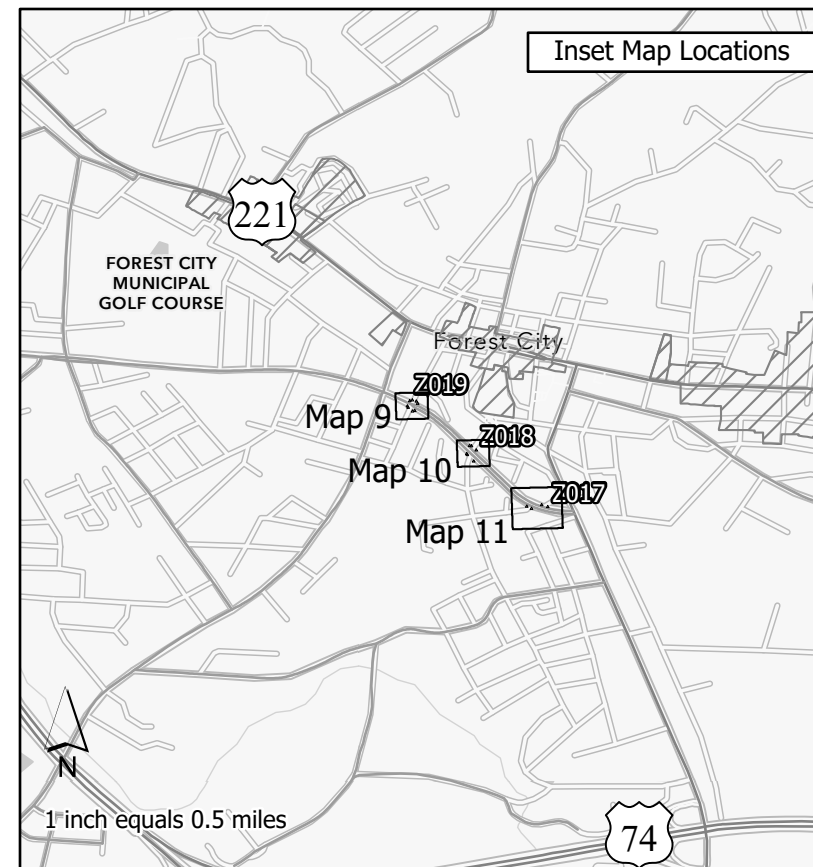


*This map inset has been intentionally left blank



Curb Ramps are associated w/ Town of Forest City (> 5K in Population).

Intersection ID	Major Route	Minor Route	Latitude	Longitude
Z019	SR 2179 Oak St	Young St	35.331339	-81.868017
Z019	SR 2179 Oak St	Young St	35.331318	-81.868099
Z019	SR 2179 Oak St	Young St	35.33146	-81.868266
Z019	SR 2179 Oak St	Young St	35.331511	-81.868295
Z019	SR 2179 Oak St	Young St	35.331707	-81.868204
Z019	SR 2179 Oak St	Young St	35.331738	-81.868017
Z019	SR 2179 Oak St	Young St	35.331695	-81.867959
Z019	SR 2179 Oak St	Young St	35.33161	-81.867906
Z018	SR 2179 Oak St	Park Square	35.329854	-81.865701
Z018	SR 2179 Oak St	Park Square	35.330009	-81.86588
Z018	SR 2179 Oak St	Park Square	35.330022	-81.865952
Z018	SR 2179 Oak St	Harmon St	35.329716	-81.866061
Z018	SR 2179 Oak St	Harmon St	35.329679	-81.866037
Z018	SR 2179 Oak St	Harmon St	35.329436	-81.865796
Z017	SR 2179 Oak St	W Liberty St	35.327654	-81.863622
Z017	SR 2179 Oak St	W Liberty St	35.327736	-81.863798
Z017	SR 2179 Oak St	W Liberty St	35.327721	-81.863009
Z017	SR 2179 Oak St	W Liberty St	35.327793	-81.863239



- ADA Ramp - Upgrade
- ADA Ramp - New
- ADA Ramp - Remove
- NC HPO Historic Districts
- Interstate
- US Route
- NC Route
- Secondary Route

Contract# DM00433
R-5793KA Upgrades/
Installation
WBS# 44923.3.22
FA# 4492313
Sheet 3



Map 12



Map 13



Curb Ramps are associated w/ City of Marion (> 5K in Population).

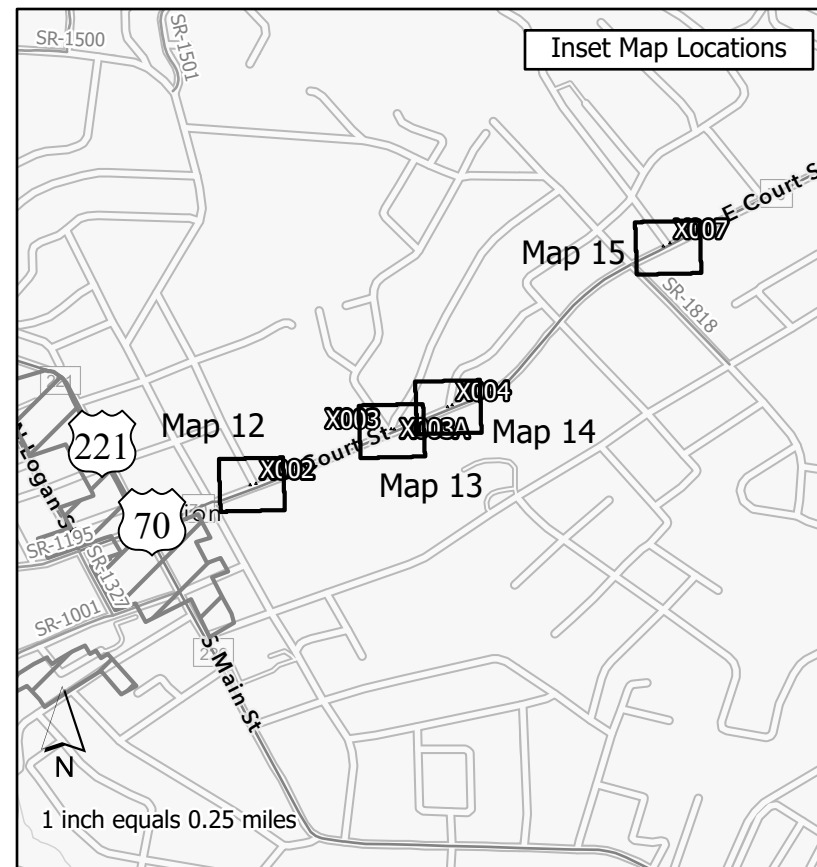
Intersection ID	Major Route	Minor Route	Latitude	Longitude
X002	US 70 (E Court St)	N Madison St	35.684906	-82.007029
X002	US 70 (E Court St)	N Madison St	35.684932	-82.00692
X003	US 70 (E Court St)	Park Ave	35.685888	-82.004504
X003A	US 70 (E Court St)	Maple Ave	35.685959	-82.004376
X003A	US 70 (E Court St)	Maple Ave	35.685955	-82.004318
X004	US 70 (E Court St)	Morgan Terrace	35.686376	-82.003314
X004	US 70 (E Court St)	Morgan Terrace	35.686411	-82.003228
X007	US 70 (E Court St)	Highland Dr	35.6894	-81.999253
X007	US 70 (E Court St)	Highland Dr	35.68946	-81.999127

*No curb ramps proposed for construction within this sheet fall within or are adjacent to NC HPO Historic Districts

Map 14



Map 15



- ADA Ramp - Upgrade
- ADA Ramp - New
- ADA Ramp - Remove
- NC HPO Historic Districts
- Interstate
- US Route
- NC Route
- Secondary Route

Contract# DM00433
R-5793KA Upgrades/
Installation
WBS# 44923.3.22
FA# 4492313
Sheet 4



Map 16



Map 17

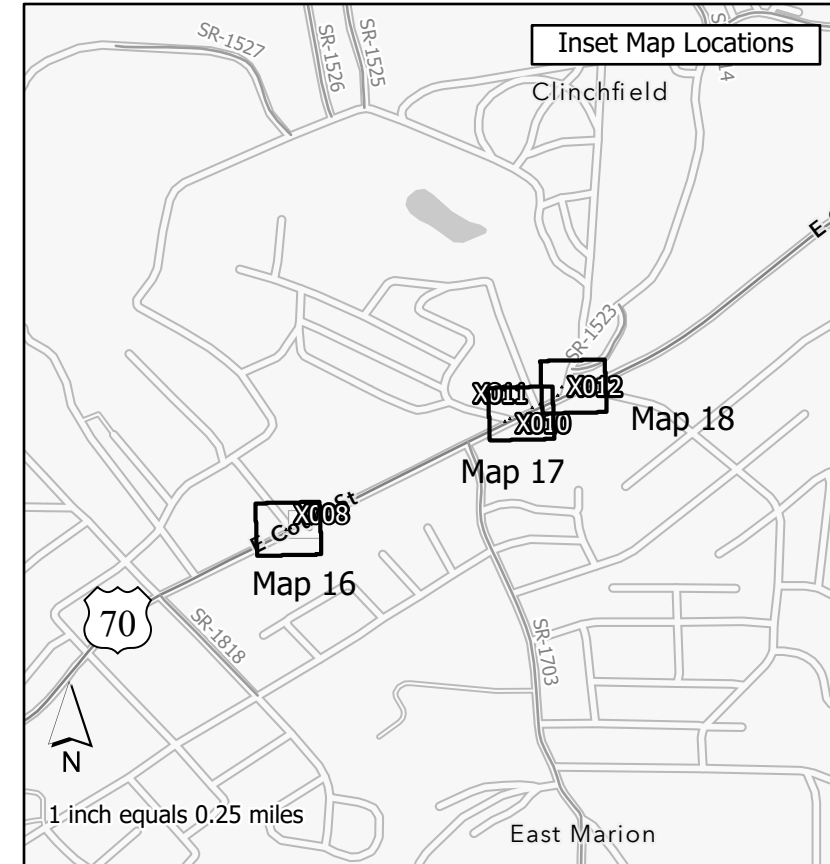


Curb Ramps are associated w/ City of Marion (> 5K in Population).

Intersection ID	Major Route	Minor Route	Latitude	Longitude
X008	US 70 (E Court St)	Gilkey St	35.690295	-81.997469
X008	US 70 (E Court St)	Gilkey St	35.690331	-81.997388
X010	US 70 (E Court St)	Seventh St	35.692387	-81.993258
X010	US 70 (E Court St)	Seventh St	35.692333	-81.99335
X011	US 70 (E Court St)	Branch St	35.692645	-81.992712
X011	US 70 (E Court St)	Branch St	35.692594	-81.992836
X012	US 70 (E Court St)	Church St	35.692984	-81.99224
X012	US 70 (E Court St)	Church St	35.692825	-81.992357

*No curb ramps proposed for construction within this sheet fall within or are adjacent to NC HPO Historic Districts

Map 18



- ADA Ramp - Upgrade
- ADA Ramp - New
- ADA Ramp - Remove
- NC HPO Historic Districts
- Interstate
- US Route
- NC Route
- Secondary Route

Contract# DM00433
R-5793KA Upgrades/
Installation
WBS# 44923.3.22
FA# 4492313
Sheet 5



Map 19



Map 20



*No curb ramps proposed for construction within this sheet fall within or are adjacent to NC HPO Historic Districts

Map 21

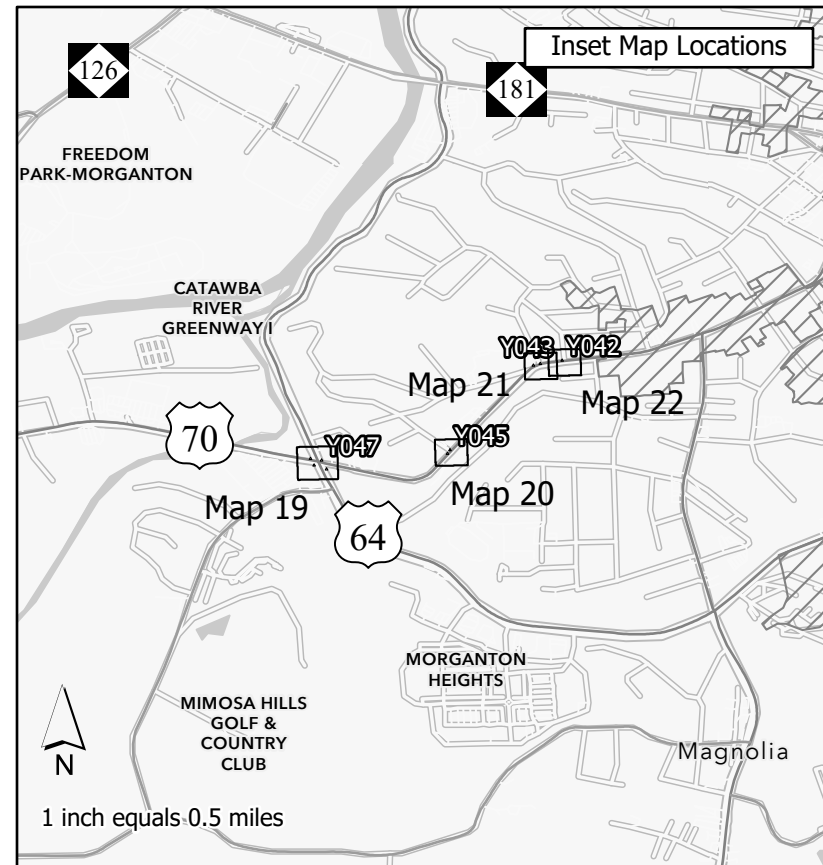


Map 22



Curb Ramps are associated w/ City of Morganton (> 5K in Population).

Intersection ID	Major Route	Minor Route	Latitude	Longitude
Y047	US 70B	US 64	35.735348	-81.708893
Y047	US 70B	US 64	35.735408	-81.709313
Y047	US 70B	US 64	35.735165	-81.709213
Y047	US 70B	US 64	35.735034	-81.708728
Y045	US 70B	Walton	35.735633	-81.704068
Y045	US 70B	Walton	35.735679	-81.704021
Y043	US 70B	Woodland	35.738904	-81.700737
Y043	US 70B	Woodland	35.738936	-81.700665
Y042	US 70B	Hillside	35.739043	-81.699796



- ADA Ramp - Upgrade
- ADA Ramp - New
- ADA Ramp - Remove
- NC HPO Historic Districts
- Interstate
- US Route
- NC Route
- Secondary Route

Contract# DM00433
 R-5793KA Upgrades/
 Installation
 WBS# 44923.3.22
 FA# 4492313
 Sheet 6



Map 23



Map 24

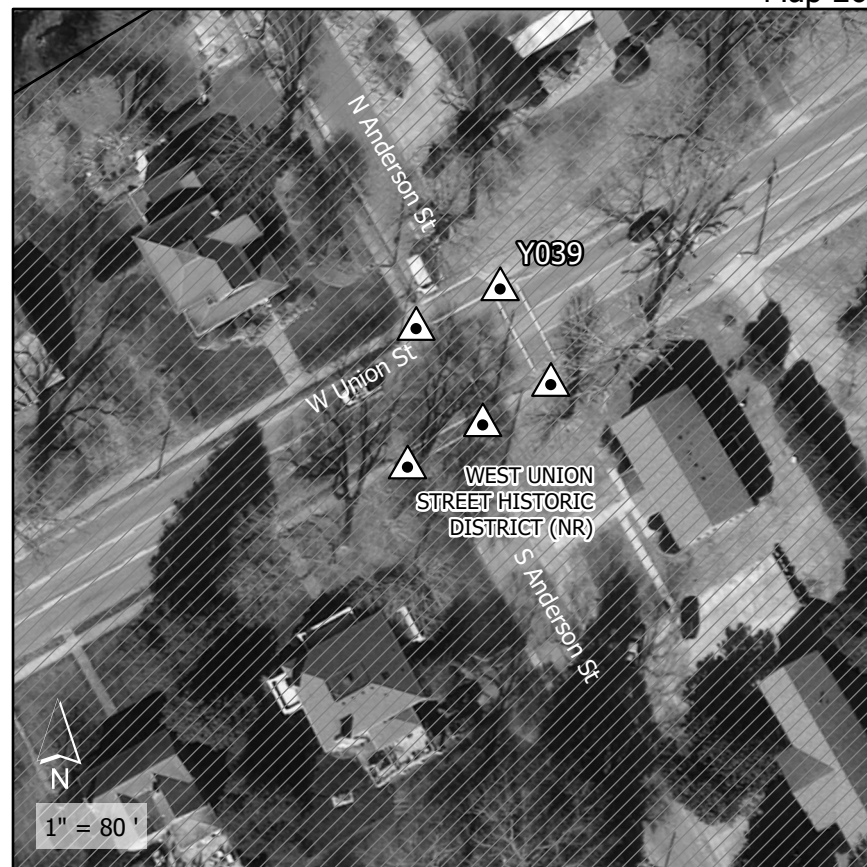


*One or more curb ramps proposed for construction within this sheet fall within or are adjacent to NC HPO Historic Districts

Map 25



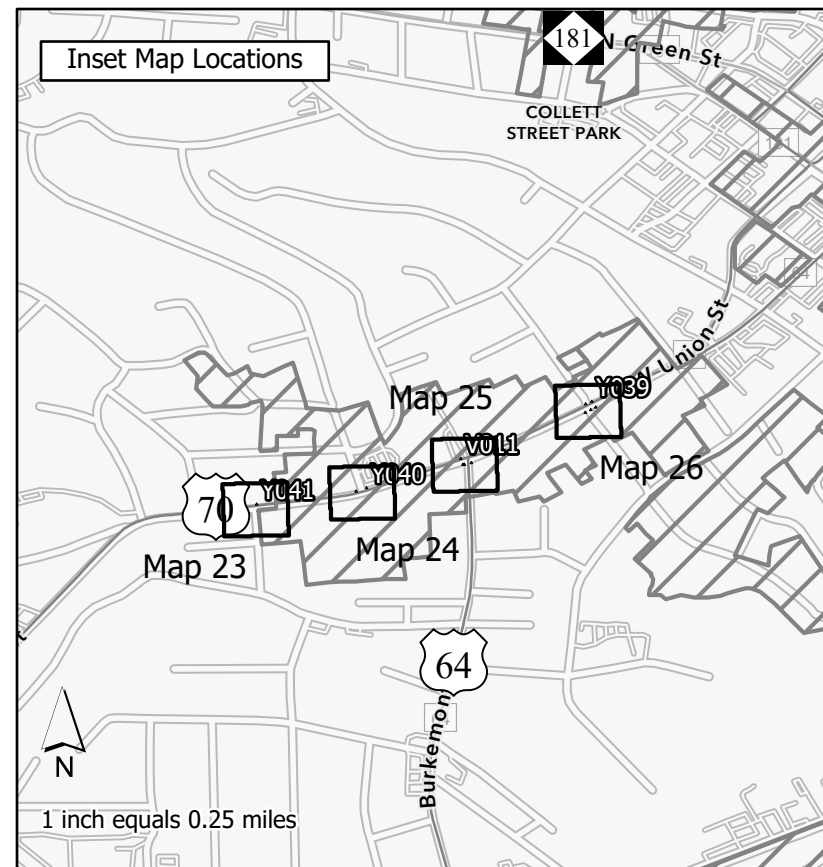
Map 26



Curb Ramps are associated w/ City of Morganton (> 5K in Population).

Intersection ID	Major Route	Minor Route	Latitude	Longitude
Y041	US 70B	Mimosa	35.739179	-81.698547
Y041	US 70B	Mimosa	35.739112	-81.698538
Y040	US 70B	Riverside	35.739458	-81.696614
Y040	US 70B	Riverside	35.739492	-81.696508
Y039	US 70B	N. Anderson	35.74112	-81.692301
Y039	US 70B	N. Anderson	35.741145	-81.692198
Y039	US 70B	S. Anderson	35.741035	-81.692393
Y039	US 70B	S. Anderson	35.741036	-81.692311
Y039	US 70B	S. Anderson	35.741106	-81.692232
V011	US 70B	Burkemont	35.740131	-81.694743
V011	US 70B	Burkemont	35.740004	-81.69469
V011	US 70B	Burkemont	35.704052	-81.69452
V011	US 70B	Burkemont	35.739981	-81.694641

Esri Community Maps Contributors, State of North Carolina DOT, Esri, HERE, Garmin, SafeGraph, GeoTechnologies, Inc, METI/NASA, USGS, EPA, NPS, US Census Bureau, USDA. Current NCCGIA Orthoimagery for NC in B&W. Intersection coordinates/locations provided by NCDOT Division 13 staff. nbharvey@ncdot.gov 10/2/2023



- ADA Ramp - Upgrade
- ADA Ramp - New
- ADA Ramp - Remove
- NC HPO Historic Districts
- Interstate
- US Route
- NC Route
- Secondary Route

Contract# DM00433
R-5793KA Upgrades/
Installation
WBS# 44923.3.22
FA# 4492313
Sheet 7



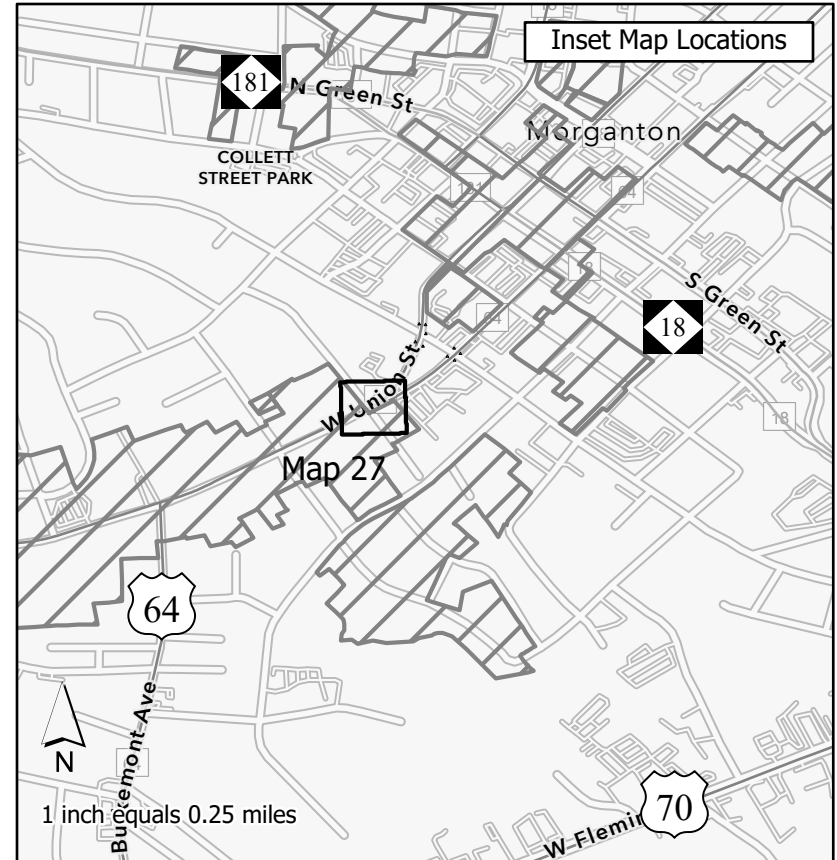
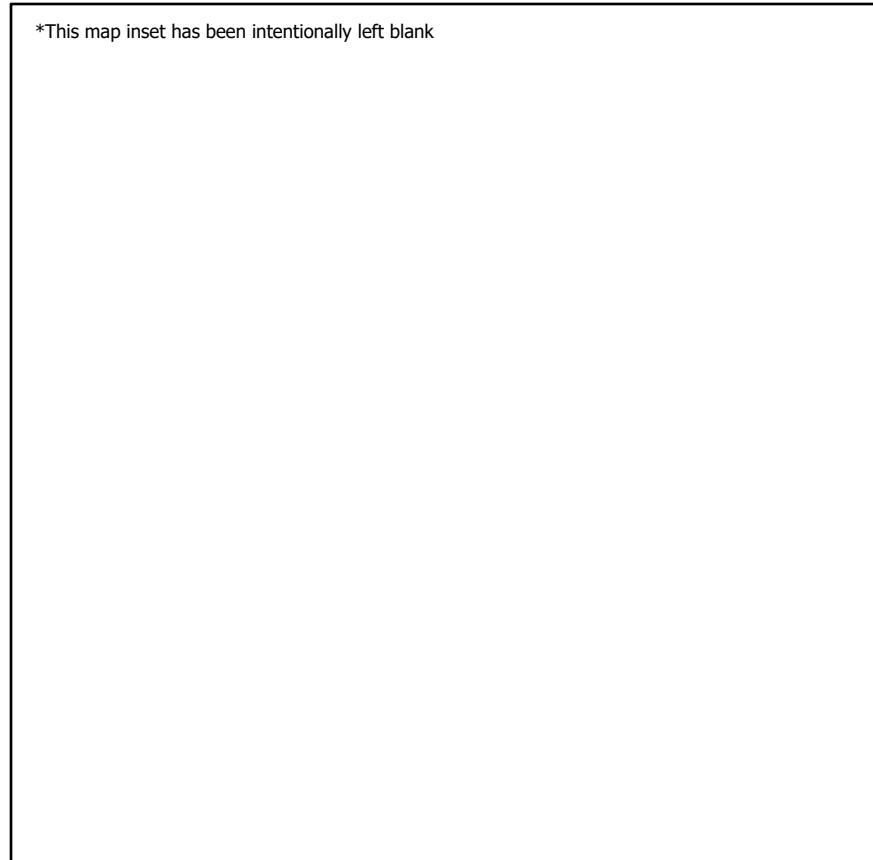
Map 27



Curb Ramps are associated w/ City of Morganton (> 5K in Population).

Intersection ID	Major Route	Minor Route	Latitude	Longitude
Y038	US 70B	Lyman	35.741816	-81.690617
Y038	US 70B	Lyman	35.741861	-81.69055
Y038	US 70B	Terrace	35.741903	-81.690637
Y038	US 70B	Terrace	35.741905	-81.690515

*One or more curb ramps proposed for construction within this sheet fall within or are adjacent to NC HPO Historic Districts



- ADA Ramp - Upgrade
- ADA Ramp - New
- ADA Ramp - Remove
- NC HPO Historic Districts
- Interstate
- US Route
- NC Route
- Secondary Route

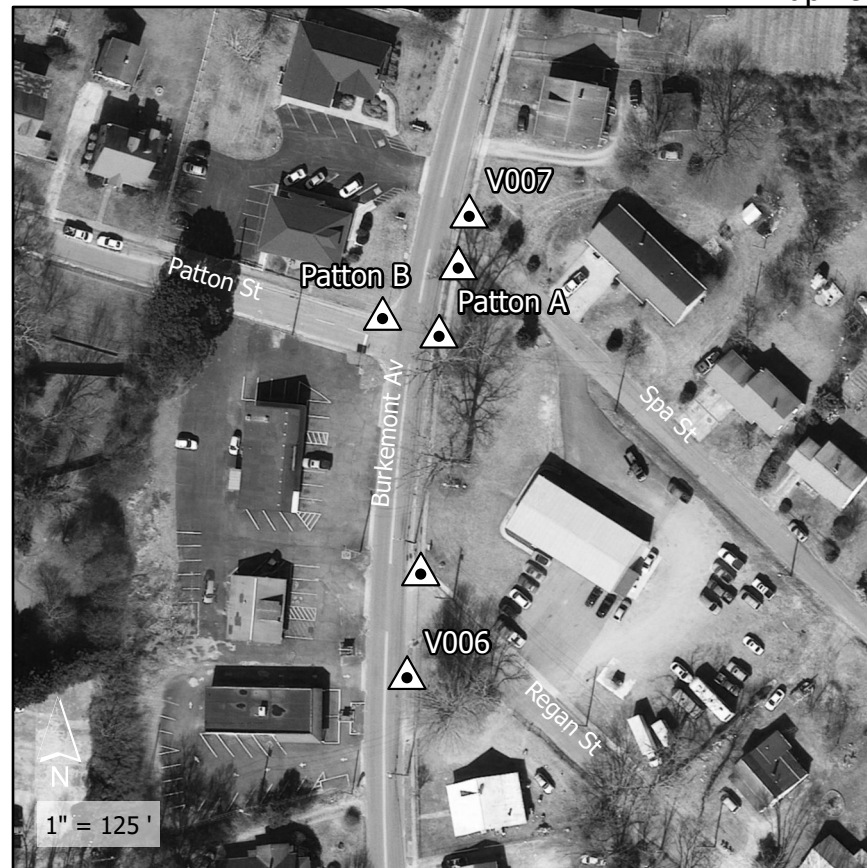
Contract# DM00433
R-5793KA Upgrades/
Installation
WBS# 44923.3.22
FA# 4492313
Sheet 8



Map 28



Map 29



*No curb ramps proposed for construction within this sheet fall within or are adjacent to NC HPO Historic Districts

Map 30

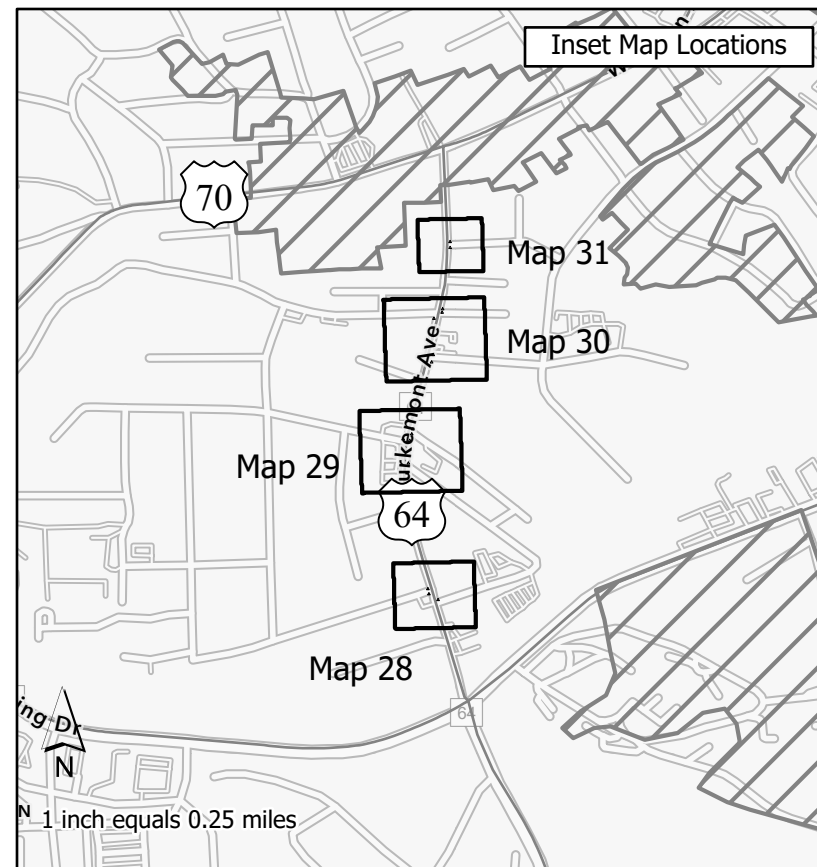


Map 31



Curb Ramps are associated w/ City of Morganton (> 5K in Population).

Intersection ID	Major Route	Minor Route	Latitude	Longitude
Greenbriar A	US 64 (Burkemont Ave)	Greenbriar	35.731786	-81.694858
Greenbriar B	US 64 (Burkemont Ave)	Greenbriar	35.73169	-81.694839
Patton A	US 64 (Burkemont Ave)	Patton	35.734578	-81.6952
Patton B	US 64 (Burkemont Ave)	Patton	35.734607	-81.695325
V005	US 64 (Burkemont Ave)	Valley	35.731581	-81.694667
V006	US 64 (Burkemont Ave)	Regan	35.734152	-81.695226
V006	US 64 (Burkemont Ave)	Regan	35.733966	-81.69525
V007	US 64 (Burkemont Ave)	Spa	35.734794	-81.695141
V007	US 64 (Burkemont Ave)	Spa	35.734701	-81.695162
V008	US 64 (Burkemont Ave)	New	35.736192	-81.694758
V008	US 64 (Burkemont Ave)	New	35.736054	-81.694788
V009	US 64 (Burkemont Ave)	Smith	35.737055	-81.694581
V009	US 64 (Burkemont Ave)	Smith	35.73699	-81.694591
V010	US 64 (Burkemont Ave)	Circle	35.73832	-81.694441
V010	US 64 (Burkemont Ave)	Circle	35.738209	-81.69444



- ADA Ramp - Upgrade
- ADA Ramp - New
- ADA Ramp - Remove
- NC HPO Historic Districts
- Interstate
- US Route
- NC Route
- Secondary Route

Contract# DM00433
 R-5793KA Upgrades/
 Installation
 WBS# 44923.3.22
 FA# 4492313
 Sheet 9

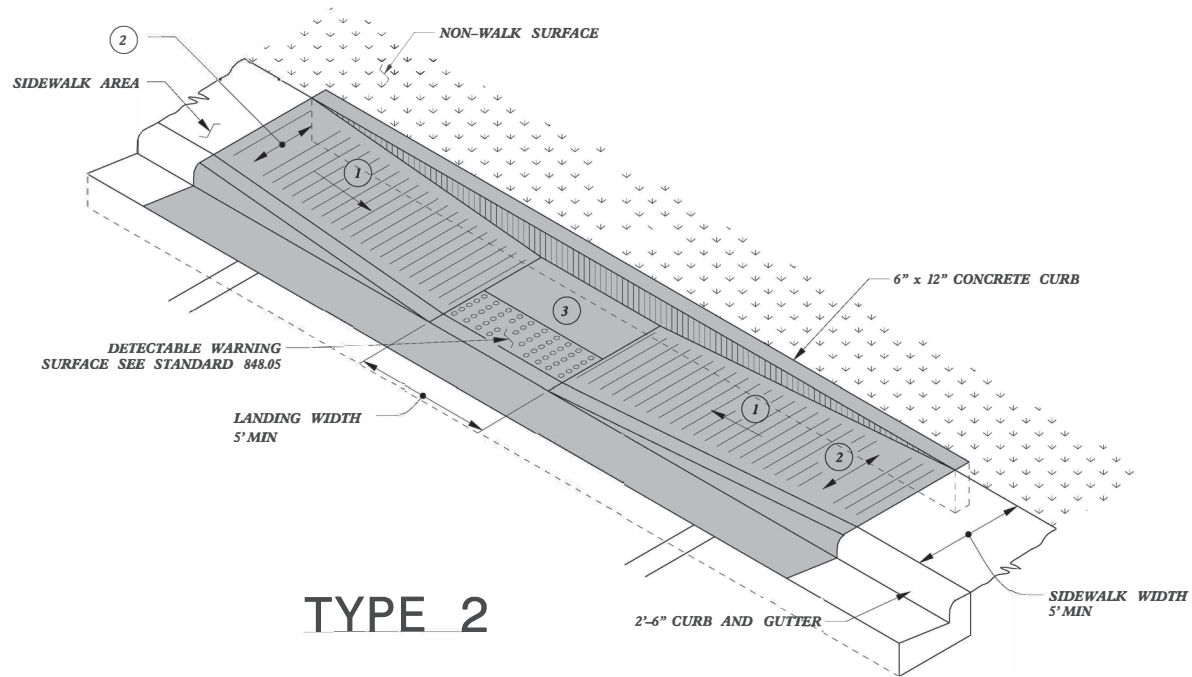


DM00433, R-5793KA, RUTHERFORD

Division	County	Municipality	Under 5k Population? (Y/N)	Major Route	Minor Route	Intersection ID	Northing (USFT)	Easting (USFT)	Asphalt Plant Mix, Pavement Repair (TONS)	2'-6" Concrete Curb and Gutter (LF)	4" Concrete Sidewalk (SY)	Concrete Curb Ramp (EA)	Remove and Replace Curb Ramps (EA)	5" Monolithic Concrete Islands (Keyed In) (SY)	Remove and Replace 4" Concrete Sidewalk (SY)	Remove Concrete Island (SY)	Remove and Replace 2'-6" Concrete Curb and Gutter (LF)	Remove Existing Concrete Curb Ramps (EA)	Adjustment of Catch Basins (EA)	Adjustment of Manholes (EA)	Adjustment of Meterboxes or Valveboxes (EA)	Thermoplastic Pavement Marking Lines (8", 90 MILS) (LF)	Thermoplastic Pavement Marking Lines (12", 90 MILS) (LF)	Thermoplastic Pavement Marking Lines (24", 90 MILS) (LF)	Thermoplastic Pavement Marking Symbol (90 MILS) (EA)	Removal of Pavement Marking Lines (4") (LF)	Removal of Pavement Marking Lines (8") (LF)	Removal of Pavement Marking Lines (12") (LF)	Removal of Pavement Marking Lines (24") (LF)	Removal of Pavement Marking Symbols & Characters (EA)	NOTES					
13	Rutherford	Forest City	N	SR 2179 (Oak St)	Westwood Dr	Z028	35.333461	-81.884806	1			1			3		5	1			1	1	135			17		10	135		17		Relocate ramp away from Oak St.			
13	Rutherford	Forest City	N	SR 2179 (Oak St)	Butler Rd	Z027	35.333181	-81.881993	1				1		3		5									28		10		28						
13	Rutherford	Forest City	N	SR 2179 (Oak St)	Butler Rd	Z027	35.333207	-81.882234					1		3		5						144					144								
13	Rutherford	Forest City	N	SR 2179 (Oak St)	Hardin Rd	Z026	35.333164	-81.881253					1		3		5																			
13	Rutherford	Forest City	N	SR 2179 (Oak St)	Hardin Rd	Z026	35.333048	-81.881119					1		6								110						110							
13	Rutherford	Forest City	N	SR 2179 (Oak St)	Hardin Rd	Z026	35.333044	-81.880898		5	5	1			5		15	1	1		1				30	2	20			30	2		Relocate ramp away from Oak St. Relocate ramp away from Oak St.			
13	Rutherford	Forest City	N	SR 2179 (Oak St)	Hardin Rd	Z026	35.333114	-81.880784	1						27		40	2					265					265					Remove 2 existing ramps not incorporated into the existing			
13	Rutherford	Forest City	N	SR 2179 (Oak St)	Hardin Rd	Z026	35.333434	-81.881338		5	5		1		3		5						200					200								
13	Rutherford	Forest City	N	SR 2179 (Oak St)	Hardin Rd	Z026	35.333482	-81.88127					1		3		5						130			2		130			36	2				
13	Rutherford	Forest City	N	SR 2179 (Oak St)	Hardin Rd	Z026	35.333379	-81.88092				1			11		5	1							11	36			11	36			Relocate ramp away from Oak St.			
13	Rutherford	Forest City	N	SR 2179 (Oak St)	Hardin Rd	Z026	35.33344	-81.881035		5	5	1			5		5	1															Relocate ramp away from Oak St.			
13	Rutherford	Forest City	N	SR 2179 (Oak St)	Grove St	Z025	35.33305	-81.879962	1						18		17	2			1												Place new ramp down Grove St to avoid utility Remove 2 existing ramps. Place new ramp down Grove St to avoid utility Remove 2 existing ramps.			
13	Rutherford	Forest City	N	SR 2179 (Oak St)	Grove St	Z025	35.333066	-81.880175							18		17	2																Remove 2 existing ramps.		
13	Rutherford	Forest City	N	SR 2179 (Oak St)	Golf St	Z024	35.332924	-81.875212	1				1		5		5	1																Remove ramp crossing Oak St. Remove and Replace ramp crossing Golf St.		
13	Rutherford	Forest City	N	SR 2179 (Oak St)	Golf St	Z024	35.332916	-81.875481					1		5		5	1																Remove ramp crossing Oak St. Remove and Replace ramp crossing Golf St.		
13	Rutherford	Forest City	N	SR 2179 (Oak St)	Twelve Oaks Dr	Z023	35.332957	-81.873557	1				1		5		5	1																Remove ramp crossing Oak St. Remove and Replace ramp crossing Twelve Oaks Dr.		
13	Rutherford	Forest City	N	SR 2179 (Oak St)	Twelve Oaks Dr	Z023	35.332965	-81.873802					1		5		5	1																Remove ramp crossing Oak St. Remove and Replace ramp crossing Twelve Oaks Dr.		
13	Rutherford	Forest City	N	SR 2179 (Oak St)	Barbara St	Z023	35.332952	-81.874156	1				1		5		5	1																Remove ramp crossing Oak St. Remove and Replace ramp crossing Barbara St.		
13	Rutherford	Forest City	N	SR 2179 (Oak St)	Barbara St	Z023	35.332942	-81.874408					1		5		5	1																Remove ramp crossing Oak St. Remove and Replace ramp crossing Barbara St.		
13	Rutherford	Forest City	N	SR 2179 (Oak St)	Forest St	Z022	35.332717	-81.872345							9		5	1																Remove ramp crossing Oak St.		
13	Rutherford	Forest City	N	SR 2179 (Oak St)	Forest St	Z022	35.332671	-81.872442				1			5		5	1			1													Relocate ramps closer to Oak St.		
13	Rutherford	Forest City	N	SR 2179 (Oak St)	Forest St	Z022	35.332659	-81.872591				1			5		5	1																Relocate ramps closer to Oak St.		
13	Rutherford	Forest City	N	SR 2179 (Oak St)	Forest St	Z022	35.332743	-81.872677							9		5	1																Remove ramp crossing Oak St.		
13	Rutherford	Forest City	N	SR 2179 (Oak St)	Forest St	Z022	35.332917	-81.872552							9		5	1																Remove ramp crossing Oak St.		
13	Rutherford	Forest City	N	SR 2179 (Oak St)	Forest St	Z022	35.332953	-81.872472							1		5	1																Relocate stop bar		
13	Rutherford	Forest City	N	SR 2179 (Oak St)	Forest St	Z022	35.332945	-81.872314				1			5		5	1			1													Move ramp closer to Oak St to avoid meter in ramp.		
13	Rutherford	Forest City	N	SR 2179 (Oak St)	Forest St	Z022	35.332896	-81.872226							9		5	1																Remove ramp crossing Oak St.		
13	Rutherford	Forest City	N	SR 2179 (Oak St)	McArthur St	Z021	35.332373	-81.870484							9		5	1																Remove ramp crossing Oak St.		
13	Rutherford	Forest City	N	SR 2179 (Oak St)	McArthur St	Z021	35.332361	-81.870582					1		3		5																	Relocate stop bar		
13	Rutherford	Forest City	N	SR 2179 (Oak St)	McArthur St	Z021	35.332383	-81.870762					1		3		5																	Remove ramp crossing Oak St.		
13	Rutherford	Forest City	N	SR 2179 (Oak St)	McArthur St	Z021	35.332447	-81.870808	1						9		5	1																Remove ramp crossing Oak St.		
13	Rutherford	Forest City	N	SR 2179 (Oak St)	McArthur St	Z021	35.33263	-81.870729							9		5	1																Remove ramp crossing Oak St.		
13	Rutherford	Forest City	N	SR 2179 (Oak St)	McArthur St	Z021	35.332657	-81.870628					1		3		5																	Relocate stop bar		
13	Rutherford	Forest City	N	SR 2179 (Oak St)	McArthur St	Z021	35.332613	-81.870468					1		3		5																		Remove ramp crossing Oak St.	
13	Rutherford	Forest City	N	SR 2179 (Oak St)	McArthur St	Z021	35.332546	-81.870423							9		10	1																Remove ramp crossing Oak St.		
13	Rutherford	Forest City	N	SR 2179 (Oak St)	Church St	Z020	35.332139	-81.869051							5		5	1																		
13	Rutherford	Forest City	N	SR 2179 (Oak St)	Church St	Z020	35.331841	-81.869152		5	3	1			2		5	1					140						140							
13	Rutherford	Forest City	N	SR 2179 (Oak St)	Church St	Z020	35.331883	-81.86933		5	3	1			2		5	1					120					120								
13	Rutherford	Forest City	N	SR 2179 (Oak St)	Church St	Z020	35.331981	-81.869386							2		5	1																		
13	Rutherford	Forest City	N	SR 2179 (Oak St)	Church St	Z020	35.332207	-81.869361							1		5	1			1								160							
13	Rutherford	Forest City	N	SR 2179 (Oak St)	Church St	Z020	35.332225	-81.869273		5	3	1			5		5	1																		
13	Rutherford	Forest City	N	SR 2179 (Oak St)	Church St	Z020	35.331854	-81.869085							1		5	1																		
13	Rutherford	Forest City	N	SR 2179 (Oak St)	Church St	Z020	35.33208	-81.869034		5	3	1			5		5	1			2		150		36	3	40			36	3			Relocate ramp closer to Oak St.		
13	Rutherford	Forest City	N	SR 2179 (Oak St)	Young St	Z019	35.331339	-81.868017		5	3	1		2	5	3	5	1					190						190						Adjust ramp location as directed.	
13	Rutherford	Forest City	N	SR 2179 (Oak St)	Young St	Z019	35.331318	-81.868099					2		9	3	5	1																	Adjust ramp location as directed.	
13	Rutherford	Forest City	N	SR 2179 (Oak St)	Young St	Z019	35.33146	-81.868266		5	2	1			9		5	1					130						130							
13	Rutherford	Forest City	N	SR 2179 (Oak St)	Young St	Z019	35.331511	-81.868295					1		3		5																			
13	Rutherford	Forest City	N	SR 2179 (Oak St)	Young St	Z019	35.331707	-81.868204																												

DM00433, R-5793KA, MCDOWELL AND BURKE

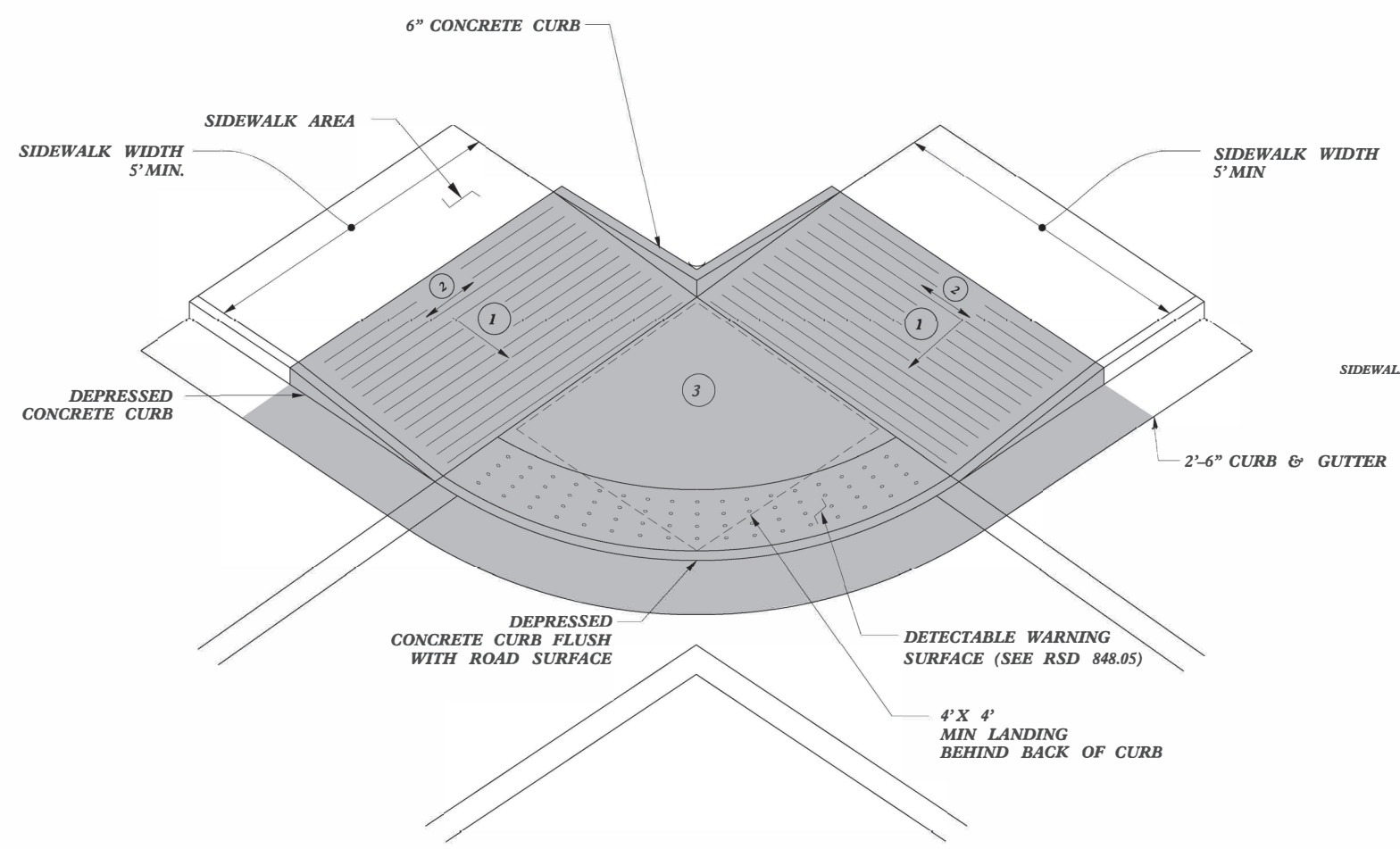
Division	County	Municipality	Under 5k Population? (Y/N)	Major Route	Minor Route	Intersection ID	Northing (USFT)	Easting (USFT)	Asphalt Plant Mix, Pavement Repair (TONS)	2'-6" Concrete Curb and Gutter (LF)	4" Concrete Sidewalk (SY)	Concrete Curb Ramp (EA)	Remove and Replace Curb Ramps (EA)	5" Monolithic Concrete Islands (Keyed In) (SY)	Remove and Replace 4" Concrete Sidewalk (SY)	Remove Concrete Island (SY)	Remove and Replace 2'-6" Concrete Curb and Gutter (LF)	Remove Existing Concrete Curb Ramps (EA)	Adjustment of Catch Basins (EA)	Adjustment of Manholes (EA)	Adjustment of Meterboxes or Valveboxes (EA)	Thermoplastic Pavement Marking Lines (8", 90 MILS) (LF)	Thermoplastic Pavement Marking Lines (12", 90 MILS) (LF)	Thermoplastic Pavement Marking Lines (24", 90 MILS) (LF)	Thermoplastic Pavement Marking Symbol (90 MILS) (EA)	Removal of Pavement Marking Lines (4") (LF)	Removal of Pavement Marking Lines (8") (LF)	Removal of Pavement Marking Lines (12") (LF)	Removal of Pavement Marking Lines (24") (LF)	Removal of Pavement Marking Symbols & Characters (EA)	NOTES			
13	McDowell	Marion	N	US 70 (E Court St)	N Madison St	X002	35.684906	-82.007029	1				1		6		5		1													Adjust Catch Basin as directed		
13	McDowell	Marion	N	US 70 (E Court St)	N Madison St	X002	35.684932	-82.00692					1		9		10																	
13	McDowell	Marion	N	US 70 (E Court St)	Park Ave	X003	35.685888	-82.004504					1		3		5																	
13	McDowell	Marion	N	US 70 (E Court St)	Maple Ave	X003A	35.685959	-82.004376	1	10	10	1			5		5																	
13	McDowell	Marion	N	US 70 (E Court St)	Maple Ave	X003A	35.685955	-82.004318							5		5																	
13	McDowell	Marion	N	US 70 (E Court St)	Morgan Terrace	X004	35.686376	-82.003314	1	10	10	1			5																			
13	McDowell	Marion	N	US 70 (E Court St)	Morgan Terrace	X004	35.686411	-82.003228							6		10																	
13	McDowell	Marion	N	US 70 (E Court St)	Highland Dr	X007	35.6894	-81.999253							3		5																	
13	McDowell	Marion	N	US 70 (E Court St)	Highland Dr	X007	35.68946	-81.999127							3		15																	
13	McDowell	Marion	N	US 70 (E Court St)	Gilkey St	X008	35.690295	-81.997469	1				1		10		15		1		1													
13	McDowell	Marion	N	US 70 (E Court St)	Gilkey St	X008	35.690331	-81.997388							10		15																	
13	McDowell	Marion	N	US 70 (E Court St)	Seventh St	X010	35.692387	-81.993258	1				1		6																		Holding water at ramp entrance.	
13	McDowell	Marion	N	US 70 (E Court St)	Seventh St	X010	35.692333	-81.99335							6		5																	
13	McDowell	Marion	N	US 70 (E Court St)	Branch St	X011	35.692645	-81.992712	1				1		3		5																	
13	McDowell	Marion	N	US 70 (E Court St)	Branch St	X011	35.692594	-81.992836							6				1															Construct ramp around drain lid.
13	McDowell	Marion	N	US 70 (E Court St)	Church St	X012	35.692984	-81.99224	1				1		3		5																	
13	McDowell	Marion	N	US 70 (E Court St)	Church St	X012	35.692825	-81.992357									5	1																Coordinate with Division Traffic Services prior to working at this location.
13	Burke	Morganton	N	US 70B	US 64	Y047	35.735348	-81.708893	1	6	3	2						1															Coordinate with Division Traffic Services prior to working at this location.	
13	Burke	Morganton	N	US 70B	US 64	Y047	35.735408	-81.709313		6	3	2						1																Coordinate with Division Traffic Services prior to working at this location.
13	Burke	Morganton	N	US 70B	US 64	Y047	35.735165	-81.709213																										Coordinate with Division Traffic Services prior to working at this location.
13	Burke	Morganton	N	US 70B	US 64	Y047	35.735034	-81.708728																										Coordinate with Division Traffic Services prior to working at this location.
13	Burke	Morganton	N	US 70B	Walton	Y045	35.735633	-81.704068	1				1		6		5						100				100							
13	Burke	Morganton	N	US 70B	Walton	Y045	35.735679	-81.704021							9		10																	
13	Burke	Morganton	N	US 70B	Woodland	Y043	35.738904	-81.700737	1				1		3		5						140				140							
13	Burke	Morganton	N	US 70B	Woodland	Y043	35.738936	-81.700665							3		5																	
13	Burke	Morganton	N	US 70B	Hillside	Y042	35.739043	-81.699796	1				1		3		5						90				90							
13	Burke	Morganton	N	US 70B	Mimosa	Y041	35.739179	-81.698547	1				1		6		5							120			76						Convert to Hi-Visibility Crosswalk	
13	Burke	Morganton	N	US 70B	Mimosa	Y041	35.739112	-81.698538	1				1		17		5						90				90							
13	Burke	Morganton	N	US 70B	Riverside	Y040	35.739458	-81.696614	1				1		3		5						150				150							
13	Burke	Morganton	N	US 70B	Riverside	Y040	35.739492	-81.696508	1				1		4		5																	
13	Burke	Morganton	N	US 70B	N. Anderson	Y039	35.74112	-81.692301	1				1		3		5						60				60							
13	Burke	Morganton	N	US 70B	N. Anderson	Y039	35.741145	-81.692198	1				1		3		5							120			80						Convert to Hi-Visibility Crosswalk	
13	Burke	Morganton	N	US 70B	S. Anderson	Y039	35.741035	-81.692393	1				1		3		5																	
13	Burke	Morganton	N	US 70B	S. Anderson	Y039	35.741036	-81.692311					1		3		5						60				60							
13	Burke	Morganton	N	US 70B	S. Anderson	Y039	35.741106	-81.692232	1				1		6		5																	
13	Burke	Morganton	N	US 70B	Burkemont	V011	35.740131	-81.694743	1				1		6		5							120			80						Convert to Hi-Visibility Crosswalk	
13	Burke	Morganton	N	US 70B	Burkemont	V011	35.740004	-81.69469					2		6		5																	
13	Burke	Morganton	N	US 70B	Burkemont	V011	35.704052	-81.69452	1				1		6		5						90				90							
13	Burke	Morganton	N	US 70B	Lyman	Y038	35.741816	-81.690617	1				1		7		5																	
13	Burke	Morganton	N	US 70B	Lyman	Y038	35.741861	-81.69055	1				1		7		5																	
13	Burke	Morganton	N	US 70B	Terrace	Y038	35.741903	-81.690637	1				1		3		5																	
13	Burke	Morganton	N	US 70B	Terrace	Y038	35.741905	-81.690515	1				1		3		5																	
13	Burke	Morganton	N	US 64 (Burkemont Ave)	Greenbriar	Greenbriar A	35.731786	-81.694858	1				1		3		5																	
13	Burke	Morganton	N	US 64 (Burkemont Ave)	Greenbriar	Greenbriar B	35.73169	-81.694839					1		3		5																	
13	Burke	Morganton	N	US 64 (Burkemont Ave)	Patton	Patton A	35.734578	-81.6952	1				1		16		5																	Convert to Hi-Visibility Crosswalk
13	Burke	Morganton	N	US 64 (Burkemont Ave)	Patton	Patton B	35.734607	-81.695325					1		3		5							96										
13	Burke	Morganton	N	US 64 (Burkemont Ave)	Valley	V005	35.731581	-81.694667	1				1		3		5																	
13	Burke	Morganton	N	US 64 (Burkemont Ave)	Regan	V006	35.734152	-81.695226	1				1		6		5																	
13	Burke	Morganton	N	US 64 (Burkemont Ave)	Regan	V006	35.733966	-81.69525	1				1		3		5																	
13	Burke	Morganton	N	US 64 (Burkemont Ave)	Spa	V007	35.734794	-81.695141	1				1		3		5																	
13	Burke	Morganton																																



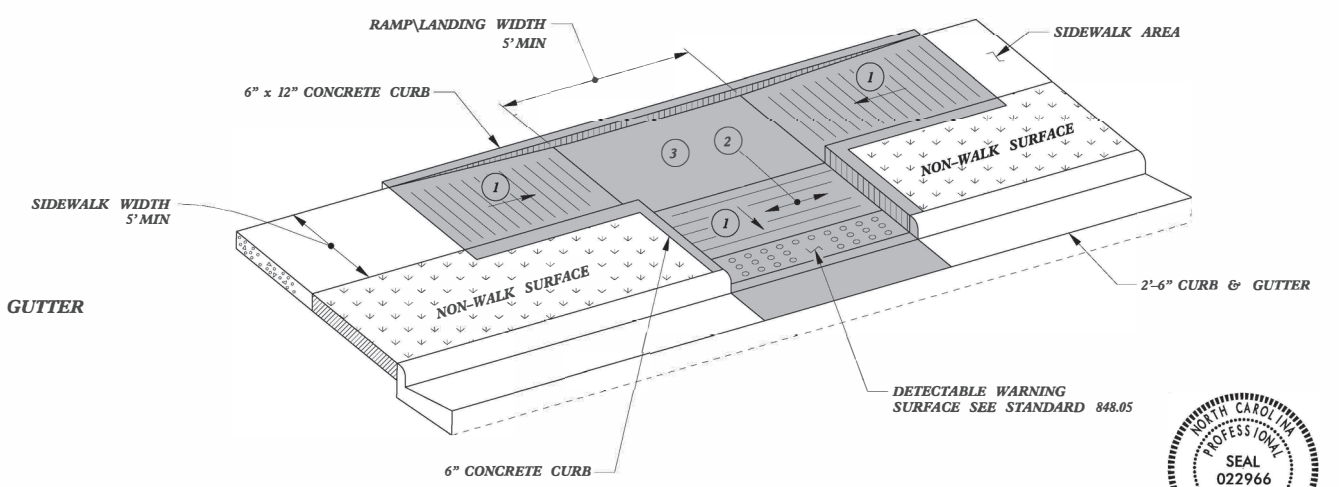
TYPE 2

PAY LIMITS FOR 1 CURB RAMP

- 1 8.33% (12:1) MAX RAMP SLOPE
- 2 CROSS SLOPE: 2.00%
- 3 CURB RAMPS REQUIRE A (4'-0") MINIMUM LANDING WITH A MAXIMUM CROSS SLOPE AND LONGITUDINAL SLOPE OF 2.00% WHERE PEDESTRIANS PERFORM TURNING MANEUVERS. SLOPE TO DRAIN TO CURB.



TYPE 2A



TYPE 3

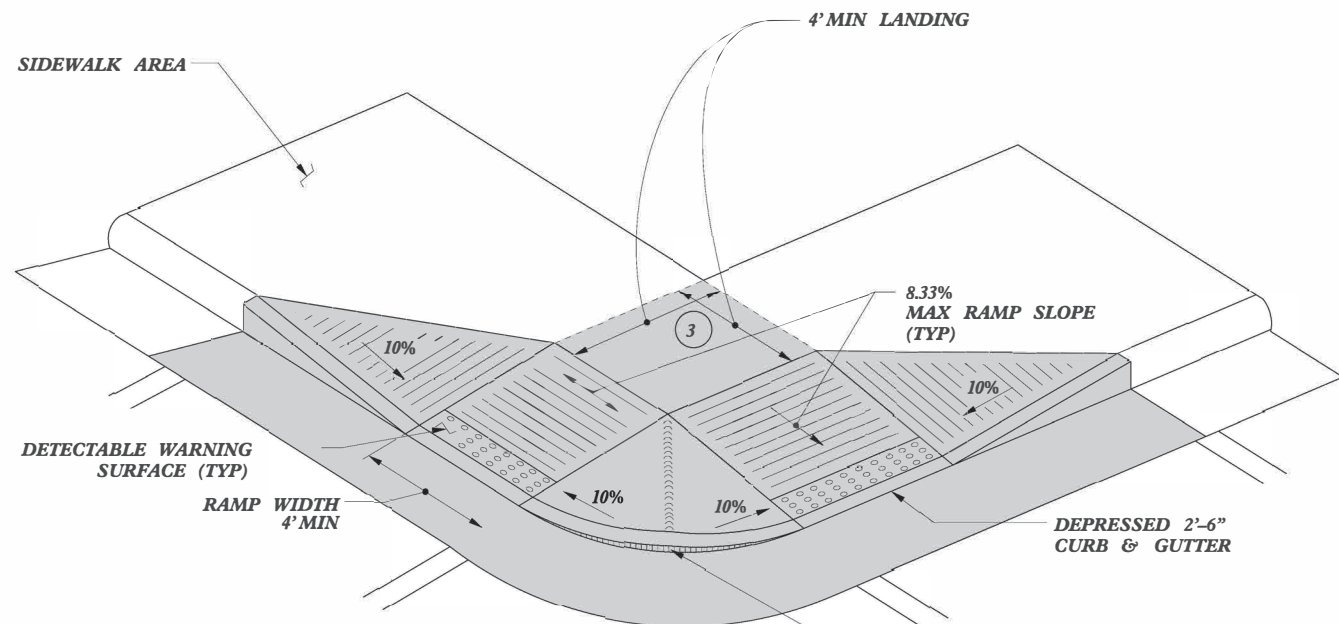


DOCUMENT NOT CONSIDERED FINAL UNLESS ALL SIGNATURES COMPLETED

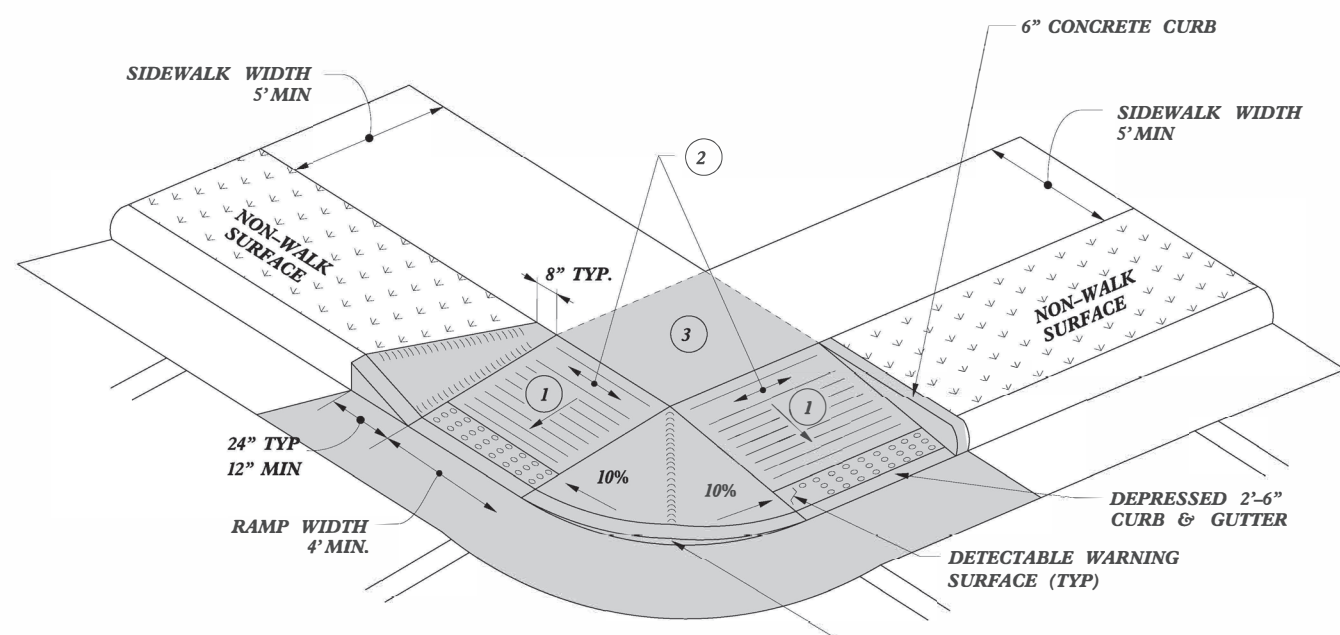
CONTRACT STANDARDS AND DEVELOPMENT UNIT	
Office 919-707-6950 FAX 919-250-4119	
CURB RAMPS	
Parallel Ramps	
ORIGINAL BY: J.S. HOWERTON	DATE: 7/7/11
MODIFIED BY:	DATE:
CHECKED BY:	DATE:
FILE SPEC. sids/2012CurbRamp/CurbRampDetails.dgn	

REFER TO ROADWAY STANDARD DRAWING NUMBER 848.05 SHEET 3 OF 3 FOR ALL RAMP NOTES

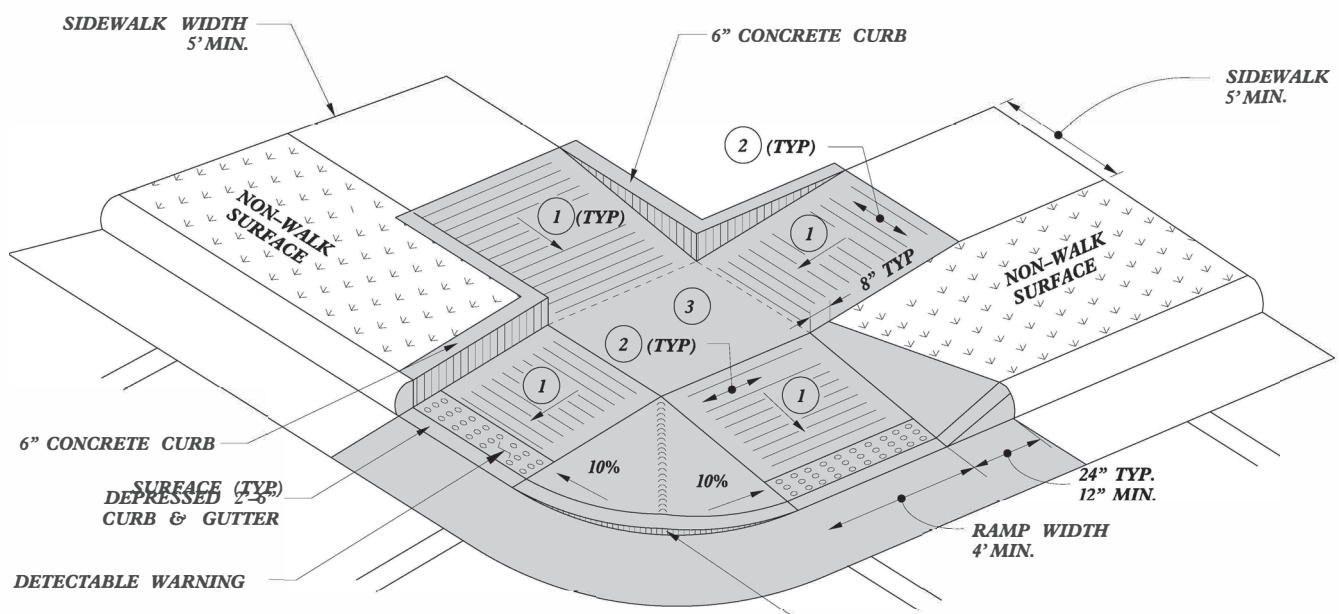
5/14/99
 \$\$\$\$\$\$SYTIME\$\$\$\$\$
 \$\$\$\$\$\$PLS R NAVE\$\$\$\$\$



TYPE 4



TYPE 4A



TYPE 5

PAY LIMITS FOR 2 CURB RAMPS

- 1 8.33% (12:1) MAX RAMP SLOPE
- 2 CROSS SLOPE: 2.00%
- 3 CURB RAMPS REQUIRE A (4'-0") MINIMUM LANDING WITH A MAXIMUM CROSS SLOPE AND LONGITUDINAL SLOPE OF 2.00% WHERE PEDESTRIANS PERFORM TURNING MANEUVERS. SLOPE TO DRAIN TO CURB.



DOCUMENT NOT CONSIDERED FINAL UNLESS ALL SIGNATURES COMPLETED

CONTRACT STANDARDS AND DEVELOPMENT UNIT	
Office 919-707-6950	FAX 919-250-4119
CURB RAMPS	
Shared Landing	
ORIGINAL BY: J.S. HOWERTON	DATE: 7/7/11
MODIFIED BY:	DATE:
CHECKED BY:	DATE:
FILE SPEC. sids/2012CurbRamp/CurbRampDetails.dgn	

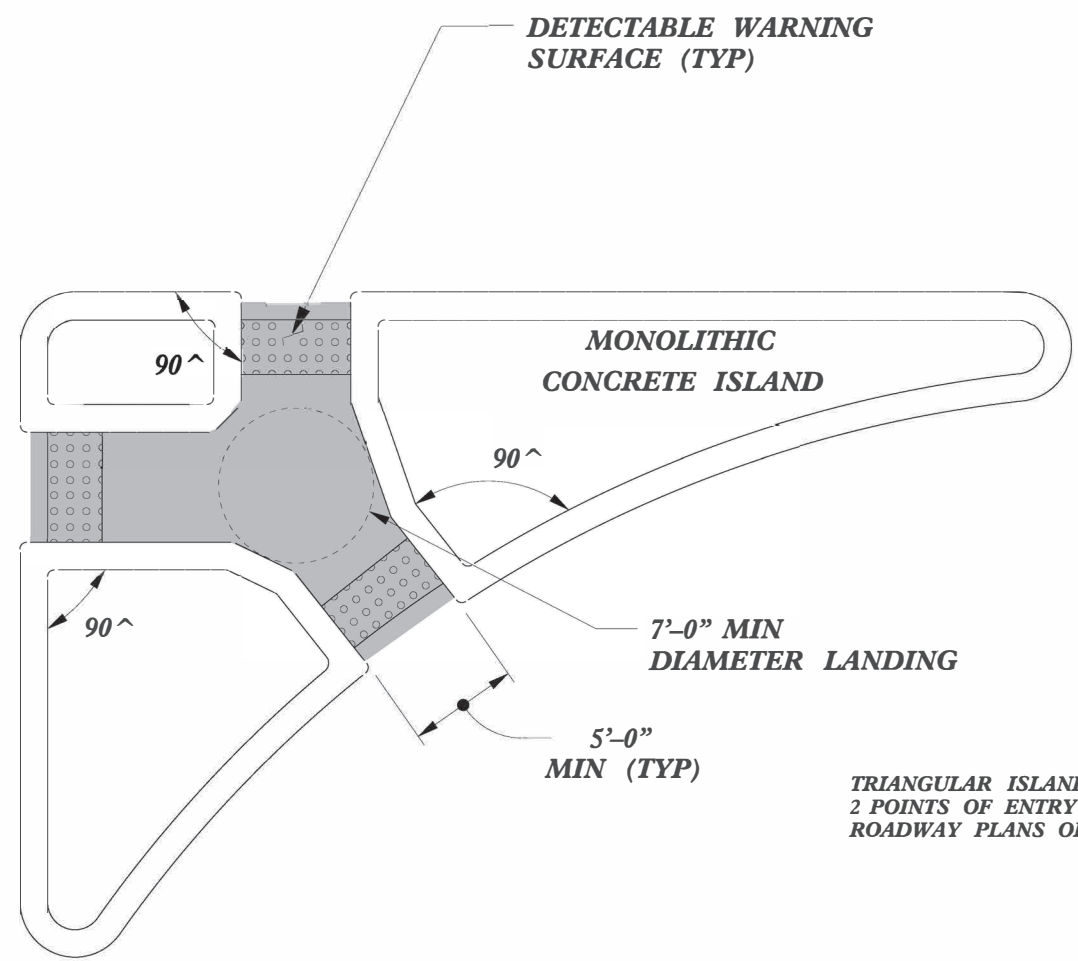
REFER TO ROADWAY STANDARD DRAWING NUMBER 848.05 SHEET 3 OF 3 FOR ALL RAMP NOTES

5/14/99
\$\$\$\$SYTIME\$\$\$\$
\$\$\$\$PURCHASE\$\$\$\$

5/14/99

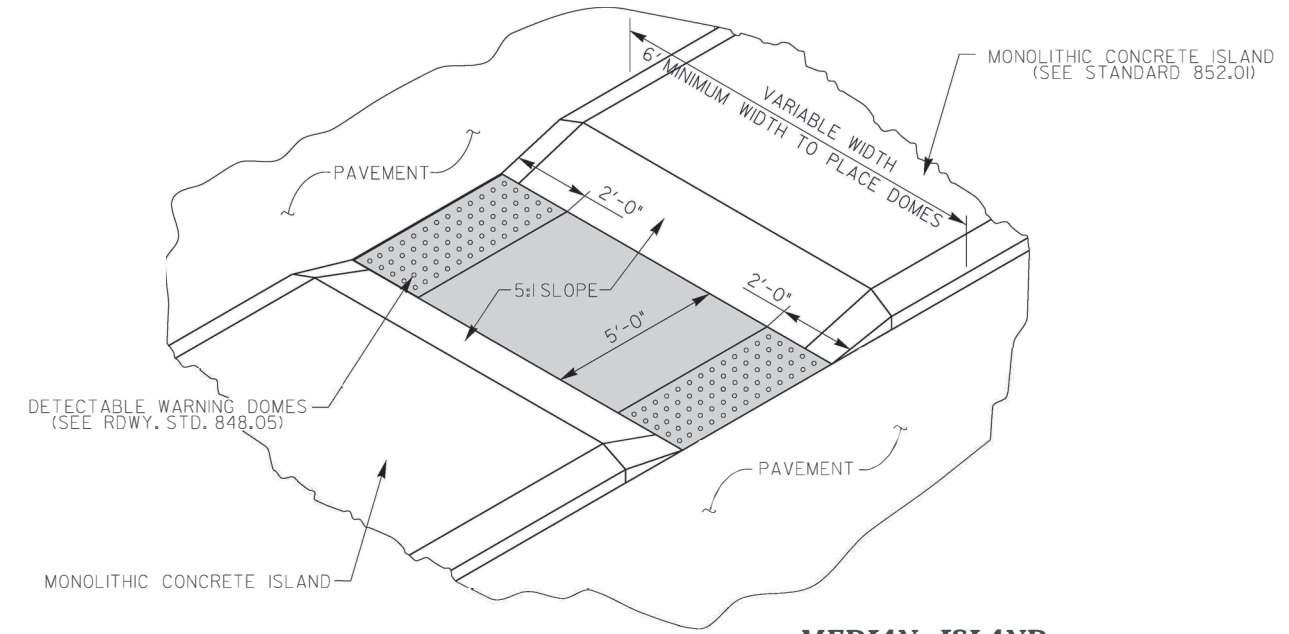
PROJECT REFERENCE NO. DM00433, R-5793KA	SHEET NO. 15
--	-----------------

PAY LIMITS FOR 2 OR 3 CURB RAMPS
(CALCULATE BASED ON NUMBER OF
SETS OF TRUNCATED DOMES)

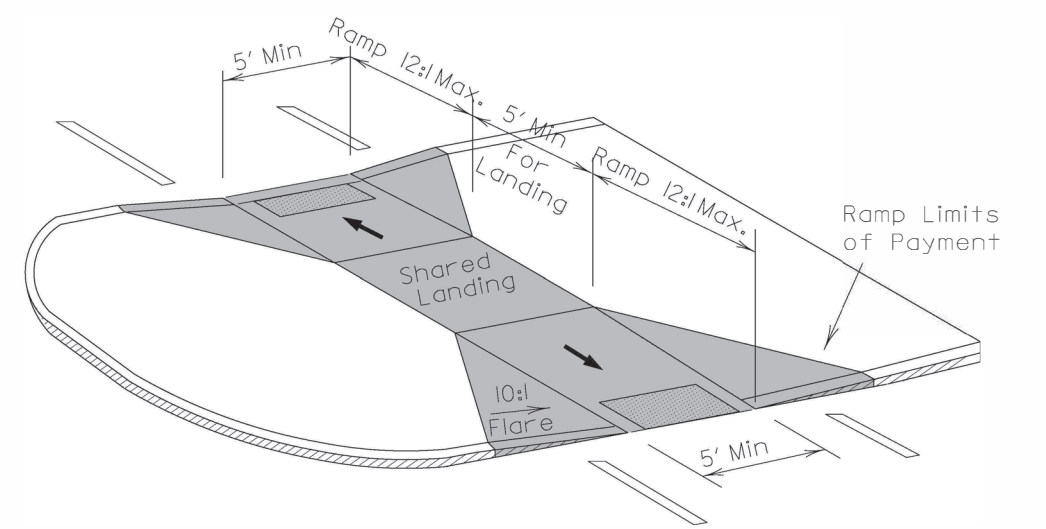


TRIANGULAR ISLANDS MAY BE CONSTRUCTED WITH ONLY
2 POINTS OF ENTRY AND EXIT AS SHOWN IN THE
ROADWAY PLANS OR AS DIRECTED BY THE ENGINEER.

**TRIANGULAR ISLAND
WITH CUT THROUGH**



**MEDIAN ISLAND
WITH CUT THROUGH**



**MEDIAN ISLAND
CURB RAMPS**

DOCUMENT NOT CONSIDERED FINAL
UNLESS ALL SIGNATURES COMPLETED

CONTRACT STANDARDS
AND DEVELOPMENT UNIT
Office 919-707-6950 FAX 919-250-4119

CURB RAMPS
Median or Turn Lane Islands

ORIGINAL BY: J.S. HOWERTON DATE: 7/7/11
MODIFIED BY: DATE:
CHECKED BY: DATE:
FILE SPEC: sids/2012CurbRamp/CurbRampDetails.dgn



5/14/99
J.S. HOWERTON
ENGINEER